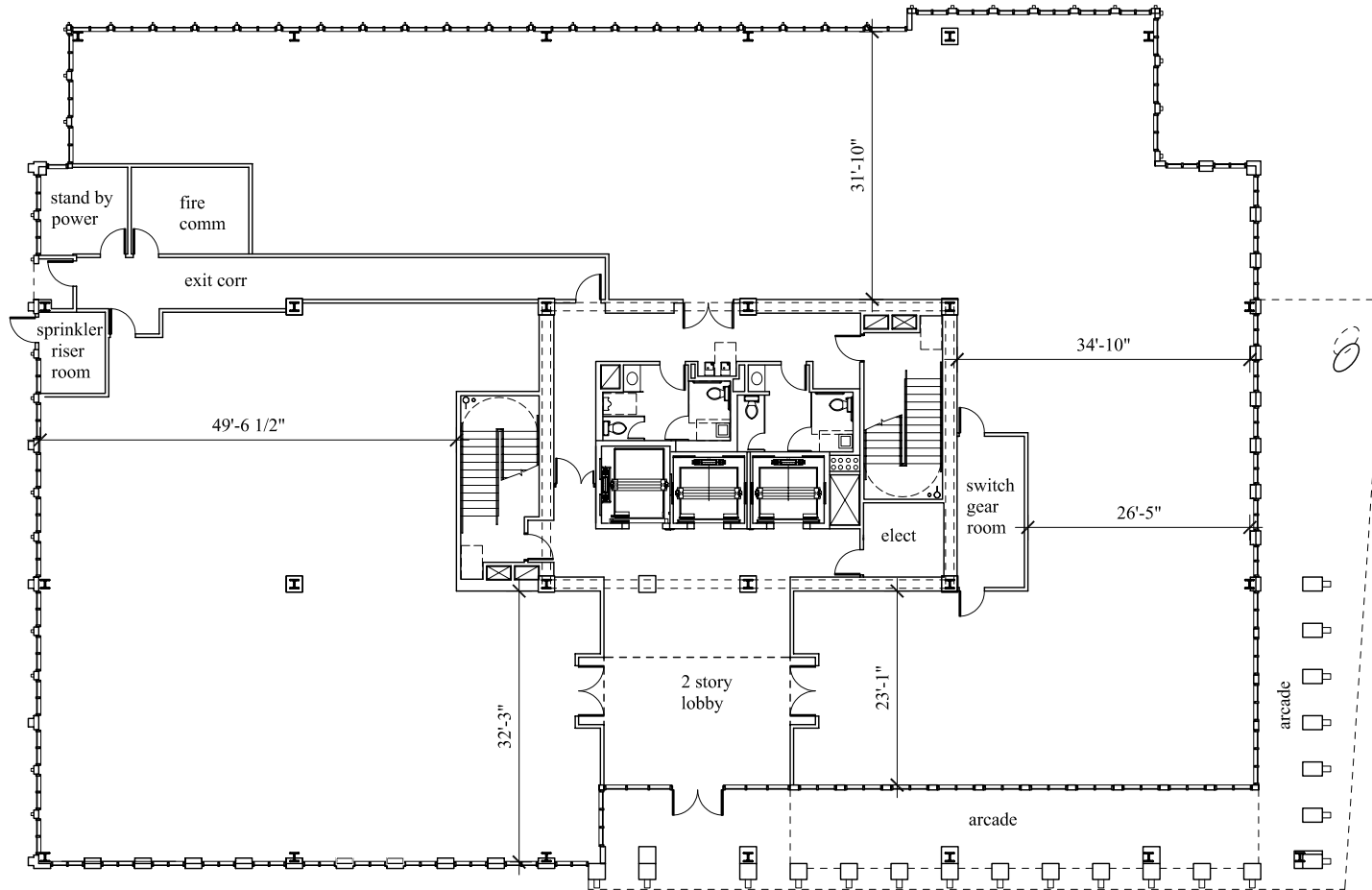




AVION TOWER

WEST SHORE



Mercedes Angell, *Director*
 Cushman & Wakefield of Florida, Inc.
 One Tampa City Center, Suite 3600 • Tampa, FL 33602
 813-204-5344 direct • 813-221-9166 fax
 mercedes.angell@cushwake.com



Plan North

FIRST FLOOR PLAN

EXTERIOR GROSS = 14,246 sq ft
 RENTABLE = 12,777 sq ft